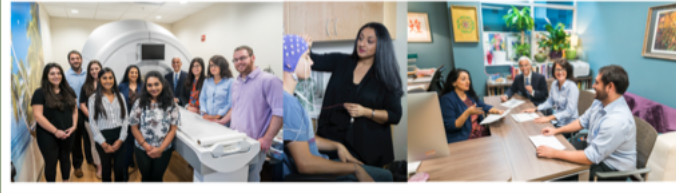


We are hiring! Post-doctoral Position in the Jha Lab



The laboratory of Dr. Amishi Jha (Division of Cognitive & Behavioral Neuroscience, Dept. of Psychology, University of Miami) is seeking a full-time Post-Doctoral Associate. The post-doctoral associate will oversee data collection, analysis, and dissemination of neurobehavioral research that investigates the impact of mindfulness training in high-demand cohorts. A Ph.D. in psychology, neuroscience or related field is required. Cognitive neuroscience expertise (attention, working memory, executive control), prior experience in conducting psychological training studies involving large-scale planning and logistical coordination, and a track record of academic publications are required. Familiarity with programming psychological experiments and advanced statistical methods involving HLM are highly preferred.



Learn more and apply here: <https://bit.ly/30FdrLM>